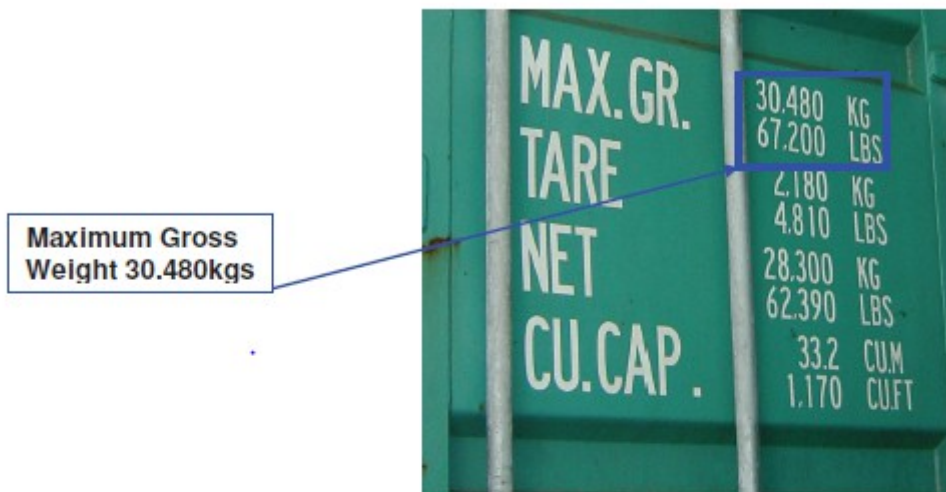


Installation Instruction of Flexitanks

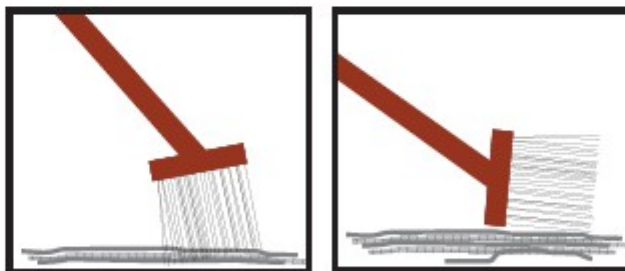
1.)

The BÜscherhoff Flexitank may only be installed into the designated container. Those containers must belong to the „Heavy Duty“ class and also provide no damages.



2.)

Before the installation of the Flexitank the container floor must be cleaned. Also check that no damages are present.



The Container must have a valid CSC registration, as well as to be "Heavy Tested" (30tons). The container has to be clean and odour neutral. Damages of any kind can not be accepted. The age limit of the Container shall not exceed the age of 5 years.

You have especially to ensure that no hard, sharp or pointed items can stab into the Flexitank (nails, screw heads,... etc). Nails and other sharp things have to be removed. Screw heads can be pasted over with tape.

Stowing recommendation for Flexitank = middle/middle (on Deck below).



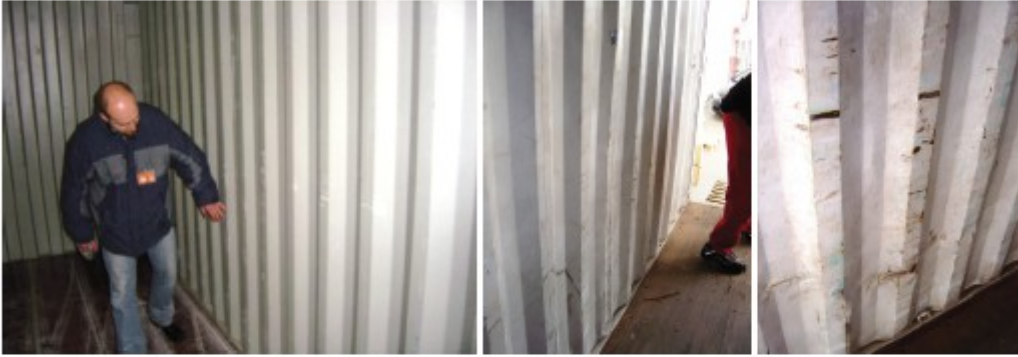
Surface irregularities or repaired parts must be pasted over with tape.



3.)

After checking the container floor, ensure that the container walls are also free of damages, repair sheets and sharp-edged welding seams.

If you detect repaired parts or damages the container has to be bartered because otherwise the Flexitank could be damaged. Rough welding seams can be pasted over with tape.



4.)

If the container is checked and declared as okay according to the above described specifications, the container walls and the container floor are going to be covered with cardboard material, plastic plates or film.





5.)

After the preparations of the container are finished the Flexitank can be taken out of the packaging and laid directly into the lined container.



ATTENTION: To prevent a damage of the Flexitank your shoes have to be completely cleaned or better been put off. It is strongly recommended to use covers on your shoes prior to entering the container at this stage.

Every Flexitank has a short installation instruction, a caution sticker and a seal for the door enclosed.

The Flexitank has to be unrolled in a way that the filling valve is underneath the tank and pointing to the door.



The Flexitank is going to be spread out and adjusted centrally. The Flexitank has a red X in the middle which indicates the middle to the lateral container walls. In the case of flexitanks shipped with a middle flange, the middle flange marks the middle to the lateral container walls.



The rear protrusion has to be folded over the side protrusions. This is very important to ensure a consistent deployment during the filling process.



6.) Installation of the bulkhead

6a.) Fitting of woven PP-bulkhead (not COA “Code of Practise” approved)

During the fitting of a Flexitank with woven PP-bulkhead the following has to be observed: The woven PP-bulkhead stitched to the Flexitank during production process and is located inside the packaging. The bulkhead provides flaps on the upper and lower end in which the upper and lower steel bar has to be pushed through. For each Bulkhead you need a pack of 7 steel bars. (each pack: 5 x 2,41 meter / 1 x 2,36 meter + a telescopic sleeve / 1 x 1,90 meter) The 2,36 meter steel bar with the telescopic sleeve is lower steel bar. The 5 x 2,41 meter steel bars are the additional horizontal steel bars. The 1,90 meter steel bar is vertical one.



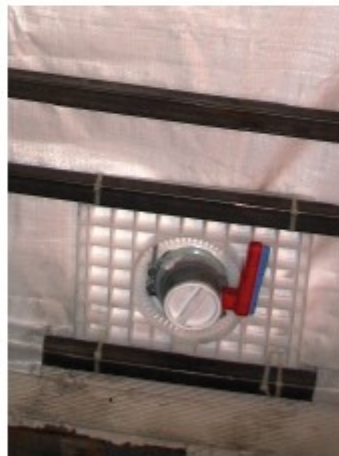
On the upper end of the bulkhead lashing straps are provided in order to be able to fix the bulkhead on the upper fixing mounts with which you hang the bulkhead inside the container.



After hanging in the bulkhead the remaining steel bars are going to be hanged inside the provided lashing straps and the middle steel bar will be suited vertical, behind the door.



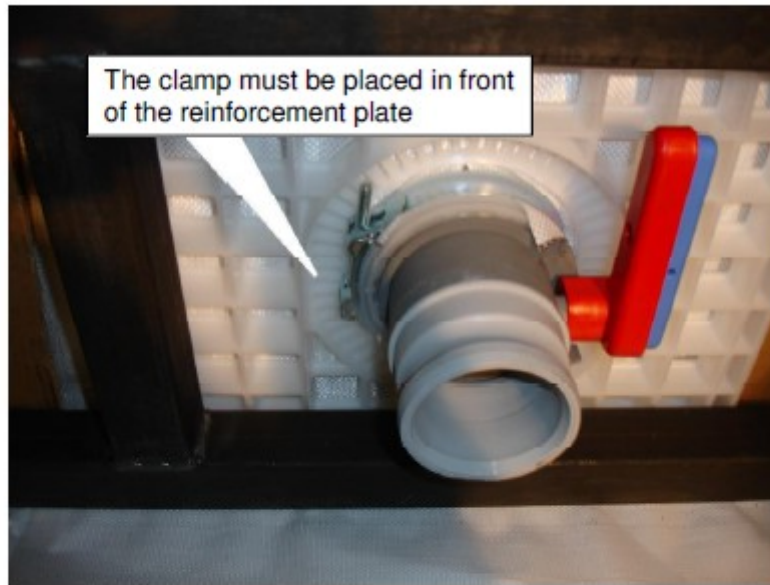
After installing all steel bars, the bottom discharge will be set in position and fixed with cable ties. Here you have to observe that the strengthening plate from the bottom discharge is located between the first and second steel bar and the fabric.



After fixing the bottom discharge the fitting of the container is finished and the filling process can be started.

7.)

The Flexitank is now ready for loading. Please ensure before loading that the strengthening plate is in the right position. It must be behind the clamp.



Flexitanks made by us give you the ability to equip the valve with various adapters. For this purpose just remove the dust cap or screw the adapter out and replace it with another one.



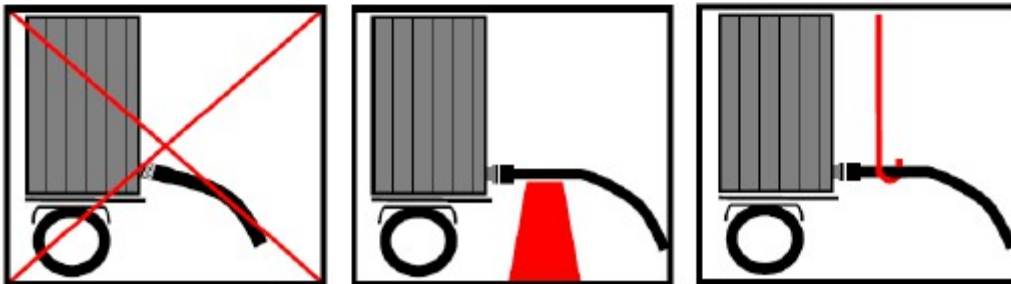
8.)

The fitting is now done. Please ensure that no tools or other items remained in the container. Before filling the left container door must be closed and the enclosed sticker and the seal must be fixed to the door.



9.)

After choosing the correct adapter and closing the left container door you can attach the filling device and start the filling process. During the filling process you have to ensure that the filling hose does not hang freely on the valve but supported in a way that the lowest forces as possible operate onto the valve.

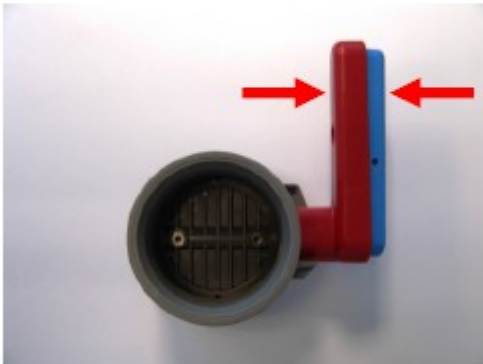




10.)

How to operate the BÜSCHERHOFF valve:

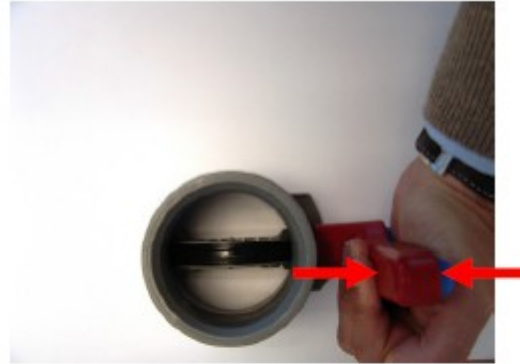
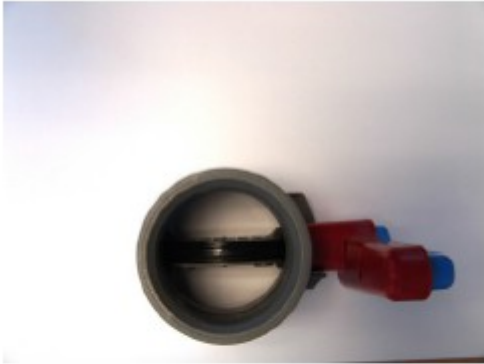
To open the valve it is necessary to unlock it. Therefore press both handle parts (blue & red) together.



Now the handle is unlocked and you can open the valve



After open the valve completely the handle is locked in the open position. To close the valve it is necessary to unlock it again. Therefore press both handle parts (blue & red) together and then close the valve.



11.)

The loading is not complete until the tank has reached the required fill level. During transport the filling grade of the Flexitank is very important. As tolerance for the filling of flexitanks +/- 2% will be accepted. If the Flexitank is not filled completely it can slip around inside the container and the possibility of a damage increases. The Flexitank must be filled complete and tight.

